



THE ROBINESSES REVIEW

VS.



PORTSMOUTH WFC



Sunday 21 April 2024 | 2:00pm kick-off
FA Women's National League Southern Premier



FINANCIAL
FITNESS GROUP



MAKE
FOOTBALL
EVERYONE'S
GAME.



The FA Women's
National League



ANDY
LIDDLE
CHAIRMAN

GOOD AFTERNOON EVERYONE FOR THE PENULTIMATE TIME THIS SEASON. IT SEEMS LIKE ONLY FIVE MINUTES AGO THAT WE WERE KICKING OFF AGAINST TODAY'S OPPONENTS PORTSMOUTH ON THE FIRST DAY OF THE SEASON.

If you've been reading these notes for a while, you'll know I grew up in Southampton, so through very gritted teeth I would like to congratulate Portsmouth on winning the League this year!

In all seriousness, it has been a phenomenal season for our guests who have lost just once in a very tough division, so huge congratulations to Jay and Pompey Women.

Last year's winners, Watford, have been relegated from the Championship with two games left to play, having won only three games this season, which really does show how difficult it is to make the transition, and get a foothold in your first year following promotion. We wish Portsmouth a competitive season and a much longer stay in Tier Two.

We have had our ups and downs this year, but I'm sure you'll join me in agreeing it has been entertaining. The 3-2 home win over Exeter in the Adobe Women's FA Cup, and the 4-3

over Milton Keynes in the League will stay long in the memory... both incredible last ten minutes. For spells our football has been really special, and as Pompey have proven, the key is to perform at that level with a high degree of consistency for as much of each 90 minutes as possible, across the whole season - no mean feat.

I hope you have enjoyed the season. I'll be thanking everyone involved in my final programme notes, but for now I would like to thank you, the fans, for your attendance and the huge support for the Ladies who I know appreciate it so much, and for turning out in ever increasing numbers which represents the best possible feedback for us.

See you for the Hashtag game on May 5.

Until then, enjoy the game today.

Andy Liddle,
Chairman



**FINANCIAL
FITNESS GROUP**

Proud Partners of
Gloucestershire's Largest Women's Football Club



**CHELTEMHAM TOWN
LADIES FC**

TOM DAVIES

MANAGER



GOOD AFTERNOON, AND WELCOME TO KAYTE LANE AS WE FACE NEWLY CROWNED CHAMPIONS, PORTSMOUTH FC.

It's been a roller-coaster of a season and I'm delighted that after more time away, we're able to get our final two games back at home. Support this season has been amazing, we've increased our attendances by over double in comparison to games last season, with record high league attendances of over 230 in our last two fixtures.

As we develop our club both on the pitch with increasing teams within our pathway, and off it with increased attendances and exposure to players, I want to take a moment to thank you all for being here, supporting us and helping us all grow our football club now and in the future.

Since my last programme notes, we've picked up six points with a home win vs Billericay and an away victory vs Chatham. March was always going to be a big month for us and I'm glad the players and staff have been rewarded with strong displays and nine points across the month for their hard work and efforts.

This, coupled with the Reserves

finishing third in their maiden season, while unfortunately just missing out at the final hurdle on Thursday evening in the GFA County Cup Final. I want to highlight the amazing work James, Mike, and the team have done, starting from scratch this season and delivering both results on the pitch and players within the pathway off it, is something that they should all be proud of.

I'd also like to welcome Jay, his staff, players, and supporters, to today's fixture. Pompey have been formidable this season, grinding out result after result and matching the challenge in front of them. This isn't a one season development but something that has taken several years to get to this stage and something for us to aspire to.

Our final two games give our players and staff the opportunity to showcase their talent and ability against the best in the division, something I know they're all relishing and excited to highlight to you all.

Enjoy the game,
Tom



ROBINESSES SHOP

ctlfc.myshopify.com



CTLFC Mug

£6.50



CTLFC Hat

£13.50

Scan here to access the shop



CTLFC Scarf

£13.50

2023/24 Squad Player Sponsors

Contact commercial@ctafc.com to become a player sponsor



DAISY ACKERMAN
Available to Sponsor



EMILY ALLEN
SPONSOR: Nick Philip



MEGAN ATTENBOROUGH
Available to Sponsor



HENNA BUTCHER
Available to Sponsor



CHARLOTTE BUXTON
Available to Sponsor



MAISY COLLIS
Available to Sponsor



ANNABEL DAVIES
SPONSOR: Carrylift Group



HOLLY FINCH
SPONSOR: Crossfit Navalía



NATASHA HARDING
SPONSOR: Financial Fitness
Group



COURTNEY JONES
Available to Sponsor



MEGAN LEWIS
SPONSOR: Hurley & Davies
Ltd.



FFION LLEWELLYN
SPONSOR: Splashout
Bathrooms



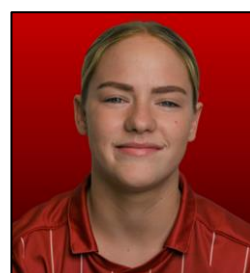
UNA LUE
Available to Sponsor



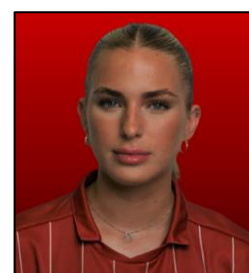
EMILY OWEN
SPONSOR: Max Wilkinson



ELLA PEMBERTON
Available to Sponsor



PHOEBIE POOLE
SPONSOR: Jon Palmer & R.
Lewis & Co. (UK) Ltd.



CHARLIE TAYLOR
Available to Sponsor



AIMEE WATSON
Available to Sponsor



LIBBY WAYLEN
Available to Sponsor

RESERVES

3rd | FA Women's National League Reserves Division South-West

Sept 3	Portsmouth (H)	1-7 L	Jan 21	Bournemouth (A)	4-1 L
Sept 10*	Maidenhead Utd (A)	1-1 _p L	Feb 4	Portsmouth (A)	5-2 W
Sept 17	Exeter City (A)	4-5 L	Feb 11	Southampton W (A)	2-4 W
Oct 1	Moneyfields (A)	2-2 D	Feb 18^A	Cheltenham Civil Service (H)	5-1 W
Oct 8	Southampton W (H)	8-0 W	Mar 17 ^A	Gloucester City (A)	1-0 W
Oct 22	Swindon (A)	0-1 L	Mar 24	Exeter City (H)	4-3 W
Oct 29**	MK Dons (A)	0-7 L	Apr 7	Keynsham (H)	6-3 W
Nov 26 ^A	Tuffley Rovers (A)	14-0 W	Apr 14	Bournemouth (H)	1-3 L
Dec 3	Keynsham (A)	5-0 W	Apr 18 ^A	AEK Boco (N) ^(GFA HQ)	0-2 L
Dec 10	Moneyfields (H)	H-W			
Jan 7	Swindon (H)	3-1 W			

* Reserves Cup

** Reserves Plate

△ GFA Women's County Trophy

DEVELOPMENT

11th | Gloucestershire County Women's Football League Division 2

Sept 3	Bradley Stoke (A)	0-7 L	Jan 21	Gloucester City Dev. (A)	2-8 L
Sept 10	Downend Flyers Res. (A)	1-1 D	Jan 28	Stoke Lane Athletic (A)	5-3 L
Sept 17	Gloucester City Dev. (H)	0-8 L	Feb 18[†]	Ellwood (H)	0-2 L
Sept 24	Bristol Ladies Union (H)	1-0 W	Mar 10	Longlevens (A)	0-8 L
Oct 1	Mangotsfield Utd Res. (H)	1-2 L	Mar 24	Mangotsfield Utd Res. (A)	3-3 D
Oct 15[‡]	Cinderford Town (H)	8-0 W	Apr 7	Bristol Ladies Union (A)	1-9 L
Oct 22[†]	Andoversford (H)	2-3 L	Apr 14	Red Falcon (A)	0-7 L
Oct 29	Stoke Lane Athletic (H)	0-6 L	Apr 21	Longlevens (H)	-
Nov 5	Abbeymead Rovers (A)	0-1 L	Apr 28	Southmead CS (H)	-
Nov 12	Bradley Stoke (H)	1-3 L	May 5	Red Falcon (H)	-
Nov 19	Kingswood (H)	H-W	May 19	Abbeymead Rovers (H)	
Dec 17	Southmead CS (A)	0-2 L			
Jan 14	Downend Flyers Res. (H)	2-3 L			

† Gordon Perrett League Cup

‡ GFA Women's Challenge Cup

#WEARENATIONAL

KAYTE LANE, GL52 3P
ADULTS £6, CONCESSIONS £3

NEXTMATCH

FA Women's
National League

Fixtures & Results 2023/24

Cheltenham Town Ladies FC

MAKE
FOOTBALL
EVERYONE'S
GAME.



DATE		OPPOSITION	COMP		Att.	POM
AUG						
Sun 20	A	Portsmouth Women	FAWNLSP	0-5	482	Owen
SUN 27	H	MAIDENHEAD UTD WOMEN	WNLC DR	3-0	109	POOLE
SEPT						
SUN 3	H	LONDON BEES	FAWNLSP	3-2	104	LLEWELLYN
THUR 7	H	CARDIFF CITY LADIES	FAWNLSP	2-2	128	ALLEN
Sun 10	A	Plymouth Argyle Women	FAWNLSP	2-3	89	Poole
SUN 17	H	MK DONS WOMEN	FAWNLSP	4-3	153	C.TAYLOR
Sun 24	A	Ipswich Town Women	FAWNLSP	0-8	541	Poole
OCT						
Sun 1	A	Ipswich Town Women	WNLC1	H-W		
Sun 8	A	Rugby Borough Women	FAWNLSP	1-3	112	Watson
THUR 12	H	OXFORD UNITED WOMEN	FAWNLSP	0-1	169	POOLE
Sun 22	A	Billericay Town Women	FAWNLSP	1-0	176	Owen
NOV						
SUN 5	H	CHATHAM TOWN WOMEN	FAWNLSP	0-0	158	C.TAYLOR
Sun 12	A	Cardiff City Ladies	WFAC1	3-0	140	Lue
SUN 26	H	EXETER CITY WOMEN	WFAC2	3-2	322	POOLE
DEC						
Sun 3	A	Hashtag United Women	FAWNLSP	1-0	98	Lue
SUN 10	H	READING WOMEN	WFAC3	0-4	291	BUXTON
JAN						
SUN 7	H	RUGBY BOROUGH WOMEN	FAWNLSP	0-4	159	WATSON
SUN 21	H	PLYMOUTH ARGYLE WOMEN	FAWNLSP	2-3	171	CTAYLOR
Sun 28	A	Mk Dons Women	FAWNLSP	0-1	186	Watson
FEB						
SUN 11	H	IPSWICH TOWN WOMEN	FAWNLSP	2-2	232	LUE
Sun 18	A	Cardiff City Ladies	FAWNLSP	1-2	235	C. Taylor
MAR						
Sun 10	A	London Bees	FAWNLSP	6-3	51	Poole
Thur 14	A	Oxford United Women	FAWNLSP	1-2	111	Poole
SUN 24	H	BILLERICAY TOWN WOMEN	FAWNLSP	4-2	234	COLLIS
Sun 31	A	Chatham Town Women	FAWNLSP	3-0	105	Poole
APR						
SUN 21	H	PORTSMOUTH WOMEN	FAWNLSP	14:00		
MAY						
SUN 5	H	HASHTAG UNITED WOMEN	FAWNLSP	14:00		

Fixture detail subject to change.

WNLC / WNLP = Women's National League Cup / Plate

WFAC = Women's FA Cup

POM = Player of the Match chosen by the opposition (or sponsor, where applicable).

TODAY'S SQUADS



CHELTEMHAM TOWN LFC

- 01 Aimee Watson
- 02 Courtney Jones
- 03 Daisy Ackerman
- 04 Holly Finch
- 06 Megan Lewis
- 07 Emily Allen
- 08 Charlie Taylor
- 09 Phoebe Poole
- 10 Megan Attenborough
- 11 Chloe Buxton
- 12 Henna Butcher
- 13 Ffion Llewellyn
- 14 Libby Waylen
- 15 Emily Owen (c)
- 16 Ella Pemberton
- 17 Annabel Davies
- 18 Maisy Collis
- 20 Natasha Harding
- 21 Una Lue
- Libby Hyett-Uckun
- Kathryn Bach
- Eva Flitney
- Jessica Smith
- Caitlin Hale
- Karly Norman



The FA Women's
National League



PORTSMOUTH WFC

- 01 Hannah Haughton (c)
- 02 Nicole Barrett
- 03 Kelci Bowers
- 04 Leeta Rutherford
- 05 Evie Gane
- 06 Jazz Younger
- 07 Tierney Scott
- 08 Ava Rowbotham
- 09 Emma Jones
- 10 Dani Lane
- 11 Daisy McLachlan
- 12 Sophie Quirk
- 14 Annie Rolf
- 15 Jess Smith
- 16 Ella Humphrey
- 17 Georgie Freeland
- 18 Scarlett Williams
- 19 Mia Adaway
- 20 Ella Wild
- 21 Ali Hall
- 23 Emily Pitman
- 25 Izzy Collins
- 27 Riva Casley



MAKE
FOOTBALL
EVERYONE'S
GAME.



X @CTLADIES

f @CTLADIESFC

@CHELTEMHAMTOWNLFC