



THE ROBINESSES REVIEW

VS.



LONDON BEES FC



Sunday 3 September 2023 | 2:00pm kick-off
FA Women's National League Southern Premier





ANDY
LIDDLE
CHAIRMAN

WE'RE LOOKING FOR FURTHER BROWNIE/ SCHOOL GROUPS ETC. TO ENJOY OUR MASCOT PACKAGES. IF THIS WOULD BE OF INTEREST, PLEASE DO GET IN TOUCH VIA CHAIRMAN@CTLFC.COM.

Good afternoon and welcome back to Kayte Lane for our second home match of the season.

I hope you enjoyed the performance and result against Maidenhead, along with the two debutants last weekend.

Welcome to the players, staff, and fans from London Bees. We enjoyed two very close matches last season, winning away and of course losing at Whaddon Road right at the death.

Welcome also, to two new sponsors. <https://thelittlejetcompany.com/>. Whether it is a worldwide or European business flight; a special occasion with family or friends; an international sporting event, The Little Jet Company based at Gloucestershire Airport, offers a personal and comprehensive executive jet airline service. The Little Jet Company are sponsoring new player announcements.

www.peterball.co.uk/ are leading Estate Agents in Gloucestershire,

whose primary focus is always customer experience. Peter Ball and Co understand how important what you want and need is, and get to know you so they can deliver on this. Peter Ball and Co are sponsoring our Training Kit. Watch out too for some joint venture t-shirts being launched!

Hot drinks and food are served in the Mitres room at the far end of the ground (opposite side to the entrance turnstiles) and other drinks are available from the Clubhouse Bar.

We're looking for further brownie/school groups etc. to enjoy our mascot packages. If this would be of interest, please do get in touch via chairman@ctlfc.com.

Enjoy the game and thank you for all your support!

Andy Liddle,
Chairman



**FINANCIAL
FITNESS GROUP**

Proud Partners of
Gloucestershire's Largest Women's Football Club



**CHELTEMHAM TOWN
LADIES FC**

TOM
DAVIES
MANAGER



GOOD AFTERNOON ONE AND ALL, AND WELCOME BACK TO KAYTE LANE FOR OUR FIRST HOME LEAGUE GAME OF THE CAMPAIGN, AGAINST LONDON BEES

Last week can only be full of positives, both with how the team played, the way we got the job done and how we were able to utilise the squad and bring two Reserve Team players onto the pitch.

Something I'm passionate about is developing players in-house and trying to provide young players both with the opportunities and the tools to develop at this football club.

We now move into this week with two home fixtures; today against London Bees, and against Cardiff City Ladies on Thursday night, before concluding the week with a trip to Plymouth.

All three games will provide their own challenges, styles, and match ups, but we're really excited to tackle them all. This group is coming together both on and off the pitch, which always takes time and with your support we're hopeful that we can put on three entertaining performances and get some points on the board to kick our season off.

I'd like to extend a very warm welcome to all who have made the trip to support London Bees today, as well as their staff, players, and directors.

Since the heartache of last season's fixture, both sides have gone under a transformation, so not much can be drawn from that evening. However, it is something that we know needs putting right, and we'll be giving everything to make sure we come out on top today.

Make some noise and get behind the team this afternoon. The twelfth player is always hugely appreciated!

Enjoy the game,
Tom

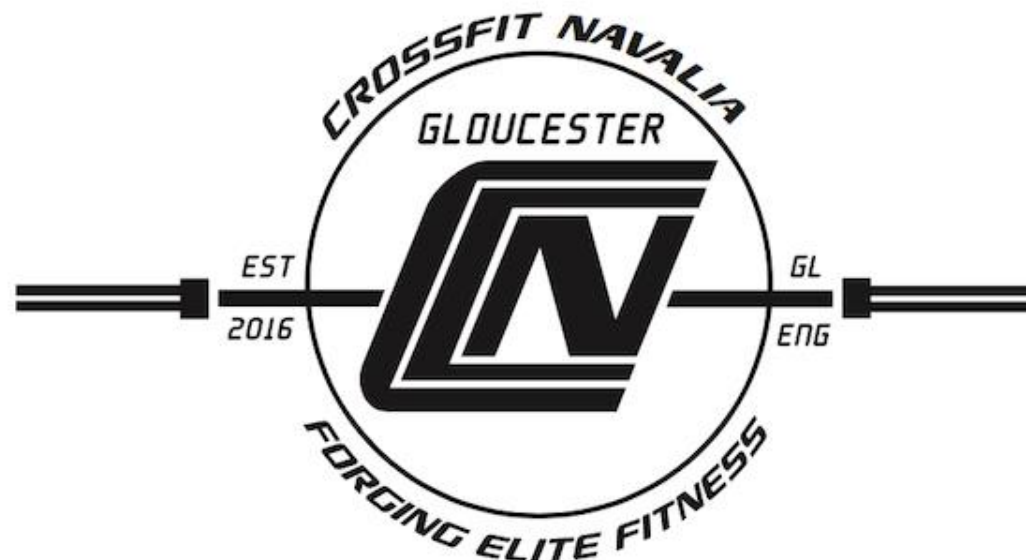
Worldwide Jet Charter & Aircraft Management

BUSINESS TRAVEL | SPORTING EVENTS | GROUP TRAVEL | MEDICAL FLIGHTS



Hangar SE48 | Gloucestershire Airport | Cheltenham | Glos GL51 6SR

Call +44 (0)1452 857606



2023/24 Squad Player Sponsors

Contact commercial@ctafc.com to become a player sponsor



DAISY ACKERMAN
Available to Sponsor



EMILY ALLEN
Available to Sponsor



LILY BILLINGHAM
Available to Sponsor



HENNA BUTCHER
Available to Sponsor



CHARLOTTE BUXTON
Available to Sponsor



MAISY COLLIS
Available to Sponsor



ANNABEL DAVIES
Available to Sponsor



HOLLY FINCH
Available to Sponsor



COURTNEY JONES
Available to Sponsor



MEGAN LEWIS
Available to Sponsor



FFION LLEWELLYN
Available to Sponsor



EMILY OWEN
Available to Sponsor



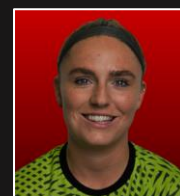
PHOEBIE POOLE
Available to Sponsor



CHARLIE TAYLOR
Available to Sponsor



JESSIE TAYLOR
Available to Sponsor



AIMEE WATSON
Available to Sponsor

WWW.CTLADIESYOUTH.CO.UK

Youth Chairman	Chris Easey	Coachchriseasey@hotmail.com
Secretary/Welfare Officer	Guy Stirling Lee	Guystirlinglee@gmail.com



Cheltenham Town Ladies 3 Maidenhead United Women 0

Last weekend's win over Maidenhead, reported by Saoirse Burke and Aimee Gowing

Last Sunday, we went to watch the Robinesses play their first home game of the season at Kayte Lane. They took on Maidenhead United Women in the FA Women's National League Cup Determining Round.

Since 2019, the Robinesses have played Maidenhead five times, coming out on top in four times.

Starting off, the main thing we both noticed throughout the game was how vocal the players were and how they communicated with each other on the pitch.

We also found that even when the girls looked like they were winning comfortably, it seemed that they kept the energy levels high and consistent throughout, which we thought was the perfect attitude to be playing football.

Early in the first half, Cheltenham won a corner, taken by Daisy Ackerman (pictured above).

Phoebie Poole managed to direct it into the back of the net, scoring Cheltenham's first goal of the season.

The Maidenhead heads dropped, and Cheltenham took the opportunity to build their lead following a penalty cleverly taken by captain Emily Owen, doubling their advantage.

Last chance before half time, Cheltenham managed to find the net a third time, leaving the score at a comfortable 3-0 at the break.

In the second half, Cheltenham came out strong just as in the first half. At the midway point of the half, Holly Finch, Lily Billingham, and Megan Lewis came on for Poole, Charlie Taylor, and Ffion Llewellyn. All three substitutes made a strong impact in the game but sadly couldn't put the ball in the back of the net for the fourth goal.

Overall, Cheltenham played really well and bounced back from the previous week's defeat against Portsmouth.



Cheltenham Town Ladies 0

London Bees 1

18 March 2023 | 18:30

FA WNL Southern Premier

The Robinesses fell to a heartbreaking 1-0 loss right at the death, as they set a new Ladies' attendance record at the Completely-Suzuki Stadium.

406 packed into Whaddon Road, beating the previous record of 375 set against Swindon in 2019.

A scrambled goal from Bolu Fisher at the death was enough to seal all three points for the visitors.

It was a bright start from Cheltenham as the ball worked out wide to Billie Haynes, who whipped a ball across the face of goal in search of an opener.

Minutes later, a nice flick from Izzy Cook opened up space for a shot but it was drilled at Marie Hourihan in the Bees' goal.

The away side came closest to opening

the scoring through the lively Juliet Adebowale, who ran through on goal before dragging her shot wide when one-on-one with Aimee Watson.

Cheltenham kept up the pressure after the let off. As the first half ticked on, Issy Newns and Jessie Taylor linked well, to create a promising chance, producing a good stop from Hourihan.

Extra flurries of action saw the teams testing each other's defences, but they would ultimately cancel each other out, with the sides level at the break.

Cheltenham started the second half much in the same vein as the first, as Haynes again caused issues down the left and fizzed a shot wide of the far post.

Despite Cheltenham's attacking threat, it was the visitors who would have the final

say.

After weathering the storm, the Bees were able to create an opening for themselves, winning a corner for their efforts.

From the dangerous ball, the mass of bodies in the box caused issues and stopped the home side from clearing their lines thoroughly.

The pinball of a goalmouth scramble saw Fisher make strong contact with a shot, slotting it home in the drama of injury time and spoiling the Cheltenham party.

Cheltenham rushed to find an equaliser in the dying seconds, but time would eventually run out, condemning them to a loss.

Cheltenham:
Watson, Finch (Davies 86), Owen, Fallon, Wathan (Collis 71), C. Taylor, Holden (Ackerman 82), Cook, Haynes, J. Taylor (Butcher 61), Newns (Congrave 82).

London Bees:
Hourihan, Vassell, Vyse, Puddefoot, Jarvis, Finneran, Adebowale (Potter 88), Tan, Fisher, Solow (Milliken 90), Goddard (Cunningham 75)

Fixtures & Results 2023/24

CHELTENHAM TOWN LFC

MAKE
FOOTBALL
EVERYONE'S
GAME.



DATE		OPPOSITION	COMP	Att.	POM
AUG					
Sun 20	A	Portsmouth Women	FAWNLSP	0-5	482 Owen
SUN 27	H	MAIDENHEAD UTD WOMEN	WNLC DR	3-0	109 POOLE
SEPT					
SUN 3	H	LONDON BEES	FAWNLSP	14:00	
THURS 7	H	CARDIFF CITY LADIES	FAWNLSP	19:45	
Sun 10	A	Plymouth Argyle Women	FAWNLSP	14:00	
SUN 17	H	MK DONS WOMEN	FAWNLSP	14:00	
Sun 24	A	Ipswich Town Women	FAWNLSP	14:00	
OCT					
Sun 8	A	Rugby Borough Women	FAWNLSP	14:00	
TUES 10	H	OXFORD UNITED WOMEN	FAWNLSP	19:45	
Sun 22	A	Billericay Town Women	FAWNLSP	14:00	
NOV					
SUN 5	H	CHATHAM TOWN WOMEN	FAWNLSP	14:00	
DEC					
Sun 3	A	Hashtag United Women	FAWNLSP	14:00	
JAN					
SUN 7	H	RUGBY BOROUGH WOMEN	FAWNLSP	14:00	
SUN 14	H	PLYMOUTH ARGYLE WOMEN	FAWNLSP	14:00	
Sun 28	A	Mk Dons Women	FAWNLSP	14:00	
FEB					
SUN 11	H	IPSWICH TOWN WOMEN	FAWNLSP	14:00	
Thurs 22	A	Cardiff City Ladies	FAWNLSP	19:45	
MAR					
Sun 10	A	London Bees	FAWNLSP	14:00	
Wed 13	A	Oxford United Women	FAWNLSP	19:45	
SUN 24	H	BILLERICAY TOWN WOMEN	FAWNLSP	14:00	
Sun 31	A	Chatham Town Women	FAWNLSP	14:00	
APR					
SUN 21	H	PORTSMOUTH WOMEN	FAWNLSP	14:00	
MAY					
SUN 5	H	HASHTAG UNITED WOMEN	FAWNLSP	14:00	

Fixture detail subject to change.

WNLC / WNLP = Women's National League Cup / Plate

WFAC = Vitality Women's FA Cup

POM = Player of the Match chosen by the opposition (or sponsor, where applicable).



TODAY'S SQUADS



CHELTEMHAM TOWN LFC

- 01 **Aimee Watson**
- 02 Courtney Jones
- 03 Daisy Ackerman
- 04 Holly Finch
- 06 Megan Lewis
- 07 Emily Allen
- 08 Charlie Taylor
- 09 Phoebe Poole
- 10 Lily Billingham
- 11 Chloe Buxton
- 12 Henna Butcher
- 13 Ffion Llewellyn
- 15 **Emily Owen (c)**
- 17 Annabel Davies
- 18 Maisy Collis
- 19 Jessie Taylor



The FA Women's
National League



LONDON BEES LFC

- 01 **Ella Hunkin**
- 02 Shauna Munelly
- 03 Sophie Fogarty
- 04 Ines-Lalini Colas
- 05 Sophie Baigent
- 06 Jemma Woodcock
- 08 Janeye Beaufort
- 09 Kayla Potter
- 10 Caitlen Boodram Star
- 11 Taylor O'Leary
- 12 Amy Jarvis
- 13 **Amber Webber**
- 15 Francesca Tilbury
- 16 Aaliyah Charles
- 17 T'yana Nee-Chambers
- 18 Andrea Dunbar-Bonnie
- 19 Amina Hanif
- 21 Adenya Henry
- 22 Ava Huntrods



MAKE
FOOTBALL
EVERYONE'S
GAME.



@CTLADIES

@CTLADIESFC

@CHELTEMHAMTOWNLFC