



# THE ROBIN'S REVIEW



Cheltenham Town Ladies FC vs Gillingham Women  
Sunday 2 April 2023  
2:00pm Kick-off  
FA Women's National League Southern Premier



## ISSUE #9



# FINANCIAL FITNESS GROUP

**Proud Partners of**  
Gloucestershire's Largest Women's Football Club



CHELTEMHAM TOWN  
LADIES FC

**JUST 2 MORE HOME GAMES REMAIN, NEXT WEEKEND (9TH)  
HERE AGAINST PORTSMOUTH, THEN 16TH AGAINST CRAWLEY  
BEFORE WE TRAVEL TO THE OTHER SIDE OF THE COUNTRY TO  
PLAY HIGH FLYING IPSWICH ON THE 30TH.**

CHAIRMAN

## ANDY LIDDLE

**Welcome back to the Corinium Stadium here in Cirencester.**

Watford seems a long time ago now as were forced to move the hard fought 2:2 draw with MK Dons to Evesham Town FC given the midweek nature and fixture clashes, and the heartbreak of the 1:0 defeat to London Bees... an injury time winner at the Completely Suzuki Stadium.

Whilst we broke our all-time attendance record with 406 fans watching the game in Cheltenham, I can't help thinking the number will be smashed sometime soon, perhaps with better weather and an earlier kick off time to attract more youngsters. Huge thanks to everyone that came to watch, the staff at the Men's football Club and shirt sponsors Mira Showers.

The clocks have gone forward, spring is here, and I'm sure we will all be baskin in the sunshine today and for the run in to the end of the season! It has been an eventful one, our first in Tier 3.

Just 2 more home games remain, next weekend (9<sup>th</sup>) here against Portsmouth, then 16<sup>th</sup> against Crawley before we travel to the other side of the country to

Also, we recently started a weekly bonus ball competition. Just a few numbers remain (at time of print) if you'd like a go: 1,4,6,10,18,20,22,25,26, (29-48), 50.

To start, pick a number and email this to chairman@ctlfcc.com, then we'll explain how to set up a weekly standing order, it's just £2.50pw.

Payments are set for each Friday with the winning number being the national lottery bonus ball number on Saturdays draw. 50% of the money will go to the pot and if this is not won, then it will be a roll over until won.

Welcome to the players, staff, and fans of Gillingham this afternoon. And an especially warm welcome to the girls from 2<sup>nd</sup> Tetbury Brownies, along with leaders and parents. We hope you all enjoy the game and make some noise!

Andy Liddle,  
Chair



**WE UNDERSTAND OUR PERFORMANCES OF LATE HAVE NOT BEEN A TRUE REFLECTION OF THE ABILITY WITHIN CAMP, HOWEVER WE'VE SAT DOWN TOGETHER, IDENTIFIED ISSUES, AND WORKED TOWARDS SETTING THESE THINGS RIGHT IN TRAINING.**

# TOM DAVIES

**Good afternoon and welcome back to the Corinium Stadium as we host Gillingham FC in WNL Southern Premier Division.**

Following the last couple of weeks, it's been refreshing to have a weekend break and reset ourselves after an emotional couple of games and events with the double header at Whaddon Road.

Naturally it was heart-breaking to concede so late on in the game, but we take pride in recording another record as we continue on our journey of development, growth, and success.

We understand our performances of late have not been a true reflection of the ability within camp, however we've sat down together, identified issues, and worked towards setting these things right in training.

Today provides the first of a busy month of four fixtures, three of which are at home with our final game being played away to Ipswich, games which we're looking forward to and understand they provide a great challenge for us to improve our game,

understanding of each other and push ourselves back towards the positions in the table which I believe over the course of the season we deserve to be within.

I'd like to welcome Gillingham, their staff, players, and all of their supporters to the today's fixture.

Today's game sees a reversal of the game a few weeks ago, one we felt disappointed with our performance and rightly Gillingham walked away with 3 points. Our aim today is to right that wrong and firstly put a performance in that we can be proud of and work towards getting 3 points on the board.

Enjoy the game, make some noise and get behind the team today!

**Tom**



In a historical night for Cheltenham Town Ladies FC, The Robinesses fell to a late goal loss as they welcomed London Bees FC to The Completely-Suzuki Stadium.

The match, which took place after Cheltenham Town had beaten Exeter City 3-1 in their Sky Bet League One clash, saw 406 supporters attend the game, beating the previous record attendance for the Robinesses which stood at 375.

A goal from substitute Kayla Potter only minutes after she entered the game was enough to seal all three points for the Bees.

It was a bright start early on for the Robinesses, as Billie Haynes drilled the ball across the face of the goal in search of the opener.

Cheltenham kept the pressure on as a nice flick from Izzy Cook got her past her marker, before drilling a shot at Marie Hourihan in the London Bees goal.

Tom Davies' side kept the



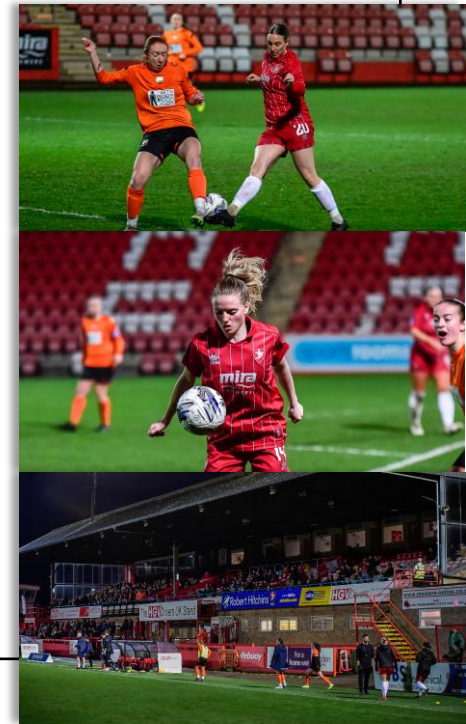
pressure up though, as Issy Newns played through Jessie Taylor whose shot called Hourihan into action once again.

The Robinesses kept the pressure on going into the second half, with Haynes' effort going just wide of the right-hand post.

Despite the good chances, London Bees won it at the death, turning the ball in from a corner after a scramble in the box with Fisher getting the final touch to seal the win.

**Cheltenham:** Watson, Finch (Davies 86), Owen, Fallon, Wathan (Collis 71), C. Taylor, Holden (Ackerman 82), Cook, Haynes, J. Taylor (Butcher 61), Newns (Congrave 82).

**London Bees:** Hourihan, Vassell, Vyse, Puddefoot, Jarvis, Finneran, Adebowale (Potter 88), Tan, Fisher, Solow (Milliken 90), Goddard (Cunningham 75).



# CHELTENHAM TOWN LADIES FC



## 2022/23 SQUAD & SPONSORS



**DAISY ACKERMAN**

AVAILABLE TO SPONSOR



**HENNA BUTCHER**

Sponsored by  
**MICHAEL BUTCHER**



**MAISY COLLIS**

Sponsored by  
**COLOUR CONNECTIONS**



**EMMA CONGRAVE**

Sponsored by  
**JON PALMER**



**IZZY COOK**

Sponsored by  
**FINANCIAL FITNESS GROUP**



**ANNABEL DAVIES**

AVAILABLE TO SPONSOR



**LIBBY DAVIES**

AVAILABLE TO SPONSOR



**KELCIE FALLON**

AVAILABLE TO SPONSOR



**HOLLY FINCH**

Sponsored by  
**CROSSFIT NAVALIA**



**SHAWNA HANNAM**

AVAILABLE TO SPONSOR



**BILLIE HAYNES**

AVAILABLE TO SPONSOR



**LAURA HOLDEN**

AVAILABLE TO SPONSOR



**COURTNEY JONES**

Sponsored by  
**JON PALMER**



**ISSY NEWNS**

Sponsored by  
**WILLIAMS AUTOMOBILES**



**EMILY OWEN**

Sponsored by  
**MAX WILKINSON**



**CHARLIE TAYLOR**

AVAILABLE TO SPONSOR



**JESSIE TAYLOR**

AVAILABLE TO SPONSOR



**AMY WATHAN**

AVAILABLE TO SPONSOR



**AIMEE WATSON**

Sponsored by  
**3D STRONG**



**TOM DAVIES**  
MANAGER

AVAILABLE TO SPONSOR



**DAN LIDDIARD**  
ASSISTANT MANAGER

AVAILABLE TO SPONSOR



**PETER MCKERNAN**  
HEAD OF MEDICAL

AVAILABLE TO SPONSOR

## U14 SPARTANS CROWNED COUNTY CUP CHAMPIONS

Before the pandemic ended the 2019/20 season, the Spartans reached the semifinals of the County Cup. Three years later, Spartans returned to Bristol and sealed the deal with a 3-1 win over Downend Flyers.

In an entertaining back-and-forth encounter, the young Robinesses entered the break with a 2-1 lead. Manager Chris Easey shed some light on his halftime team talk, commenting "As much as we wanted a third goal before halftime, we knew that the next goal was going to be important. Whichever team scored the next goal would grab the momentum of the game as it progresses."

This would help focus the Spartans, who managed to bag that crucial goal and combined with a strong defensive display, concluded their three-year story as the GFA County Cup Champions.

## YOUTH PLAYERS CELEBRATE WORLD DOWN SYNDROME DAY!

On the evening of March 21, CT Ladies Youth players took to the training pitch in their mismatching socks in support of World Down Syndrome Day 2023.



Established as part of the Lots of Socks campaign by Down Syndrome International, the idea of wearing odd socks is to start conversations through which the awareness of Down Syndrome can be spread.

World Down Syndrome Day is a global awareness day which has been observed by the United Nations since 2012. The date for World Down Syndrome Day – March 21 – was selected specifically to signify the uniqueness of the triplication of the 21st chromosome which causes Down syndrome.

# Robin's Recall

A look back at Cheltenham Town Ladies through the years



## CHELTEMHAM TOWN LFC 2-1 SOUTHAMPTON SAINTS LFC

Sunday September 16, 2018 | 14:00 | FAWNL Division One SW

On an overcast afternoon, Cheltenham continued their excellent form as they showed their fighting spirit once again.

The opening ten minutes saw Cheltenham return to their relentless pressing that was led from the top, troubling their opponents.

Despite putting the visitors under pressure, it was Saints who opened the scoring after 12 minutes when a corner wasn't dealt with by the Town defence.

Town's reaction was superb and their tremendous team spirit came through yet again, with Louise Fensome heading home from an Annie Martin corner.

Fensome's thumping header was just one of her highlights from an excellent performance.

Cheltenham regained control of the game made their possession count when Ella Hitchcox put the hosts ahead.

Hitchcox's speed on the left-hand side was too much for the Southampton defence as she broke through and rather fortuitously put Town ahead.

The second half saw an intense midfield battle between the two teams, with both managers switching formations at some point to pack the middle of the pitch.

It was a very professional last 45 minutes from Town, who defended well to limit Saints, who looked dangerous on the counter-attack.

Their closest effort on goal came when Alisha Buckingham's shot was well saved by Bec

Panniers, who got down well in the Cheltenham goal. The game ended 2-1. Overall, a great result for Cheltenham Ladies, who didn't reach their full potential this afternoon, but certainly gave it their all.

**Cheltenham:** Panniers, Purvis, Walters, Leask, Durham (Ellis), Fensome, Wilkins, Brown (Robbins), Butterfield (Dance), Hitchcox, Martin.

**Southampton Saints (alphabetically):** Browning, Buckingham, Cleverly, Curtis, Haughton, King, MorrissManosalva, Moody, Senter, Whyte, Wilkinson

# MAKE FOOTBALL EVERYONE'S GAME.

## CHELTENHAM TOWN LFC



3DATE	OPPOSITION	COMP	POM
<b>AUG</b>			
SUN 21	H PLYMOUTH ARGYLE WOMEN	FAWNLSP	3-1 BUTCHER
SUN 28	H BILLERICAY TOWN WOMEN	FAWNLSP	2-1 NEWNS
Wed 31	A MK Dons Women	FAWNLSP	1-2 Butcher
<b>SEPT</b>			
Sun 4	A Oxford United Women	FAWNLSP	0-5 Liggett
Sun 18	A Watford Women	FAWNLSP	0-6 Taylor
SUN 25	H AFC WIMBLEDON WOMEN	WNLC DR	2-4 JONES
<b>OCT</b>			
Sun 2	A London Bees	FAWNLSP	4-2 Cook
TUES 11	H BRIDGWATER UNITED WOMEN	FAWNLSP	1-1 COOK
Sun 23	A Crawley Wasps	FAWNLSP	1-0 Butcher
SUN 30	H AFC ST. AUSTELL	WNLP1	9-1 OWEN
<b>NOV</b>			
Sun 13	A Plymouth Argyle Women	WFAC 1	2-4
<b>DEC</b>			
Sun 4	A Cambridge United Women	WNLP2	4-2 Nolan
SUN 18	H IPSWICH WOMEN	FAWNLSP	0-2 NOLAN
<b>JAN</b>			
Sun 22	A Crawley Wasps	WNLP3	2-2 Cook
Sun 29	A Billericay Town Women	FAWNLSP	4-0 Watson
<b>FEB</b>			
SUN 5	H OXFORD UNITED WOMEN	FAWNLSP	2-1 WATSON
SUN 12	H WATFORD WOMEN	FAWNLSP	1-3 HOLDEN
Sun 19	A Portsmouth Women	FAWNLSP	0-2 C. Taylor
THUR 23	H MK DONS WOMEN	FAWNLSP	2-2 OWEN
Sun 26	A Plymouth Argyle Women	FAWNLSP	1-4 Cook
<b>MAR</b>			
Sun 5	A Gillingham Women	FAWNLSP	1-2 Cook
Thurs 16	A Bridgwater United Women	FAWNLSP	3-3 Cook
SAT 18	H LONDON BEES	FAWNLSP	0-1 COOK
<b>APR</b>			
SUN 2	H GILLINGHAM WOMEN	FAWNLSP	14:00
SUN 9	H PORTSMOUTH WOMEN	FAWNLSP	14:00
SUN 16	H CRAWLEY WASPS	FAWNLSP	14:00
Sun 30	A Ipswich Women	FAWNLSP	14:00

# Today's Teams



## Cheltenham Town LFC

1. Aimee Watson (GK)
2. Courtney Jones
3. Daisy Ackerman
4. Holly Finch
5. Kelcie Fallon
7. Emma Congrave
8. Charlie Taylor
10. Amy Wathan
11. Laura Holden
12. Henna Butcher
13. Shawna Hannam (GK)
14. Izzy Cook
15. Emily Owen (c)
16. Billie Haynes
17. Annabel Davies
18. Maisy Collis
19. Jessie Taylor
20. Issy News
22. Libby Davies



## Gillingham WFC

- Cara Davies (GK)  
Halle Houssein  
Grace Coombs  
Georgia Pearch  
Lenny Priest  
Vicky Ashton-Jones (c)  
Georgia Griffin  
Ellie Jeffkins  
Nicole Pepper  
Kara Fordjour  
Niamh Jestin  
Megan Maslak  
Keira Flannery  
Mary Bashford  
Charlotte Cresswell  
Breon Grant  
Chloe Copsey  
Mel Espinosa  
Phoebe Leitch  
El Keegan  
Amy Haynes  
Lottie Sharp

## Today's Other Fixtures

Billericay Town vs Portsmouth  
Ipswich Town vs Oxford Utd  
MK Dons vs Bridgwater  
Plymouth Argle vs Watford

## Today's Match Officials

### Referee

Simon Kavanagh

### Assistant Referees

Paul J W Sparrow

&

Andrew Bower

## Next Home Game



## Portsmouth Women

9 April, 2023  
2:00pm kick-off  
Venue TBC



www.ctlfc.com

@CTLadiesFC

@CTLadies

@CheltenhamTownLFC



Main Club Sponsor



Shirt Sponsor



Women's National League